

## Level 1 Frequently Missed: Sequence

Refer to The Print Tool™ Guide for Sequence Rules

### Remember:

- Prior Orientation and Start errors are Sequence errors.
- Letters that are formed differently than the Big 3 Curricula are Sequence errors.
- Please refer to the Letter Appearance Guide in your Print Tool Guide.

1)



Is this letter J a Sequence error?

- No. The D'Nealian curriculum does not have a line across the top.

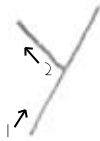
2)



Is this letter B a Sequence error?

- No. The D'Nealian curriculum makes the letter B this way.

3)



Is this a Sequence error?

- Yes. It is a prior Start error. It started at the bottom, which is incorrect.

4)



Is this a Sequence error?

- Yes. The letter O went in the wrong direction. It should have gone to the left and completed the circle.